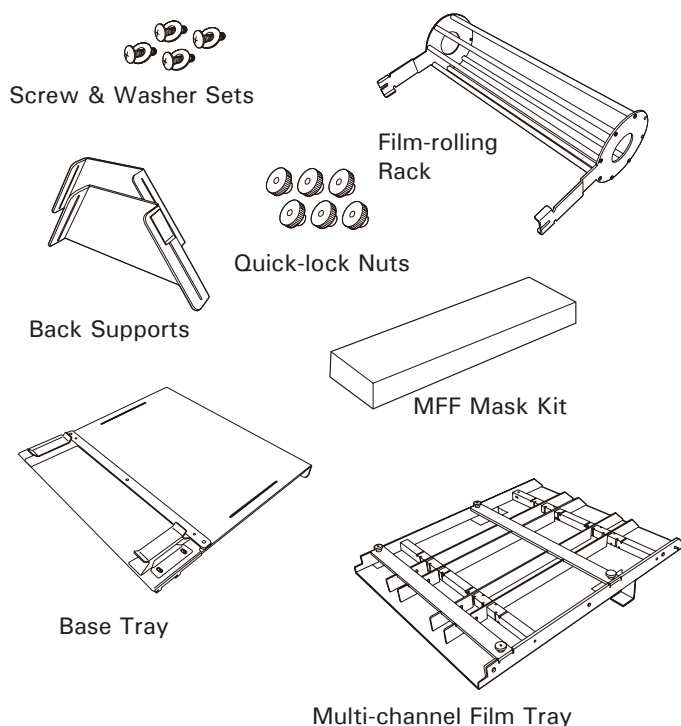


# Assemble the Multi-Channel Film Feeder (MFF) with the Digitizer

Before using the Multi-channel Film Feeder (MFF) with your digitizer, you need to mount it onto the digitizer. Follow the instructions and graphs belows to assemble the MFF correctly.

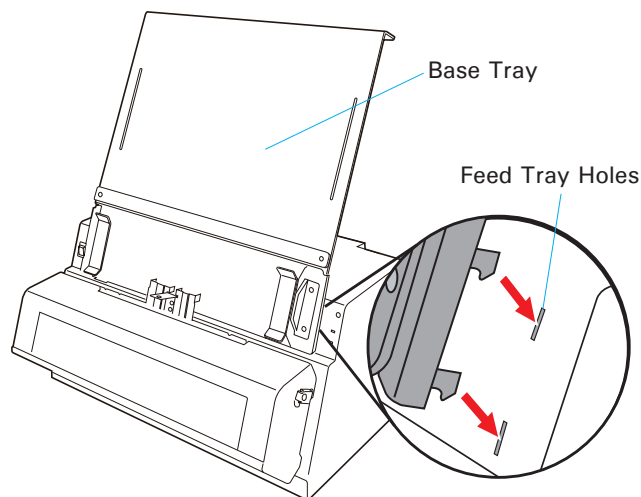
## Accessories in the Box

Check for the major components listed here.



## Installing the Base Tray

- 1) Look for two sets of the Feed Tray Holes at both ends of the front-top of the digitizer.
- 2) Insert and push down both sides of the Base Tray into its compartment holes, making sure the Base Tray snaps into place.

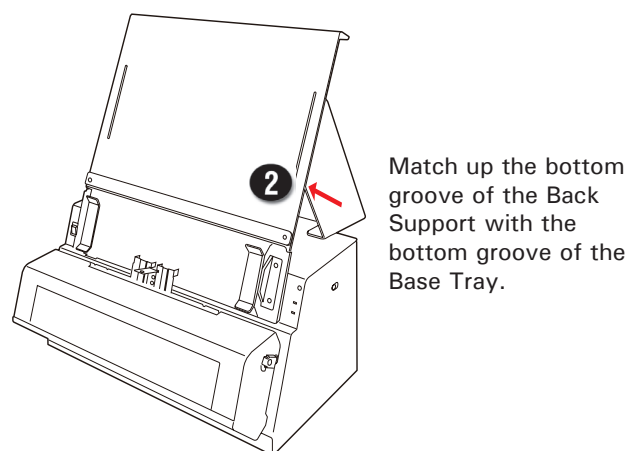


## Securing the Back Support

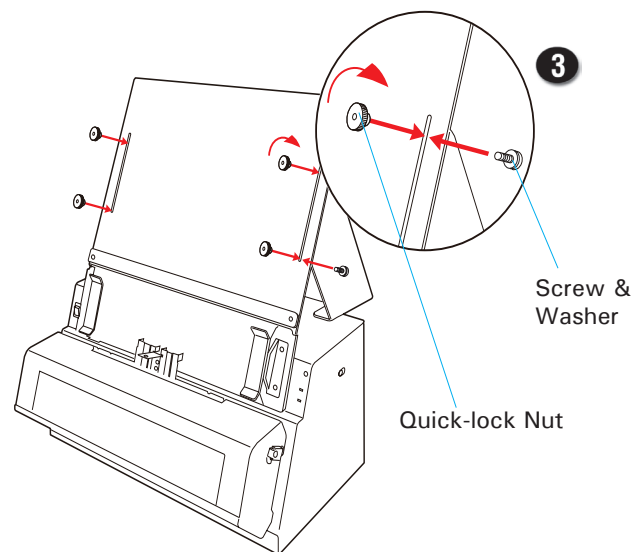
After the Base Tray has been installed on the digitizer, please follow the steps below to lock two Back Supports at the back of the Base Tray.

To lock the first Back Support:

1. Look for the side with a soft pad of the Back Support and put it facing down towards the top of the digitizer.
2. Lean the other side with a groove of the Back Support on the back of the Base Tray, making sure the bottom of the groove on the Back Support match with the bottom of the groove on the Base Tray.

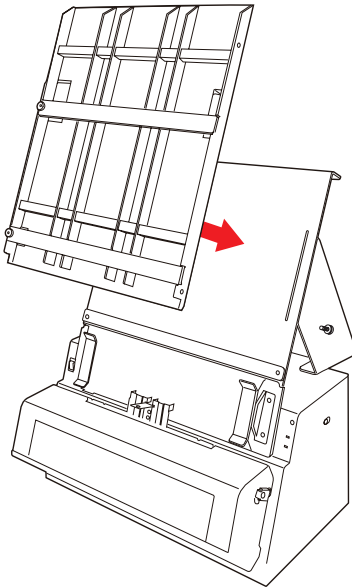


3. Insert one set of Screw & Washer through the bottom groove of the Back Support; then, screw one Quick-lock Nut on the set clockwise. Follow the step here to lock the top Quick-lock Nut on the Base Tray and the Back Support.
4. Follow the step 1 to 3 to secure another Back Support on the back of the Base Tray.

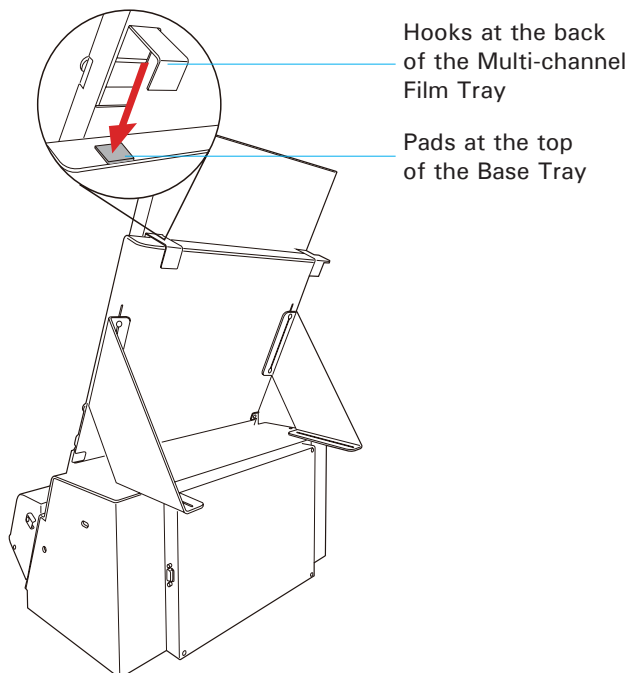


## Hanging the Multi-channel Film Tray over the Base Tray

1. Hold up both sides of the Multi-channel Film Tray carefully, locate the hooks at the back of the Multi-channel Film Tray and then use them to hang the Multi-channel Film Tray over the top of the Base Tray gently.

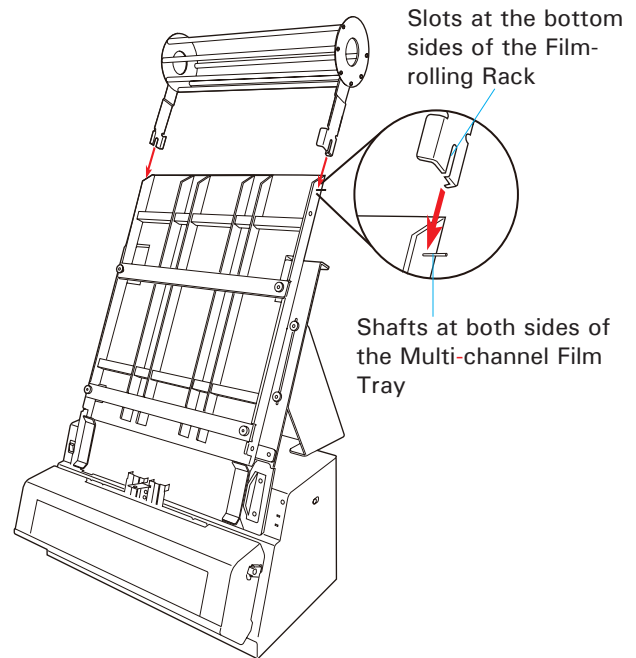


2. Please take note that when hooking up the Multi-channel Film Tray over the Base Tray, make sure that the hooks at the back of the Multi-channel Film Tray have been attached to the pads located at the top of the Base Tray.

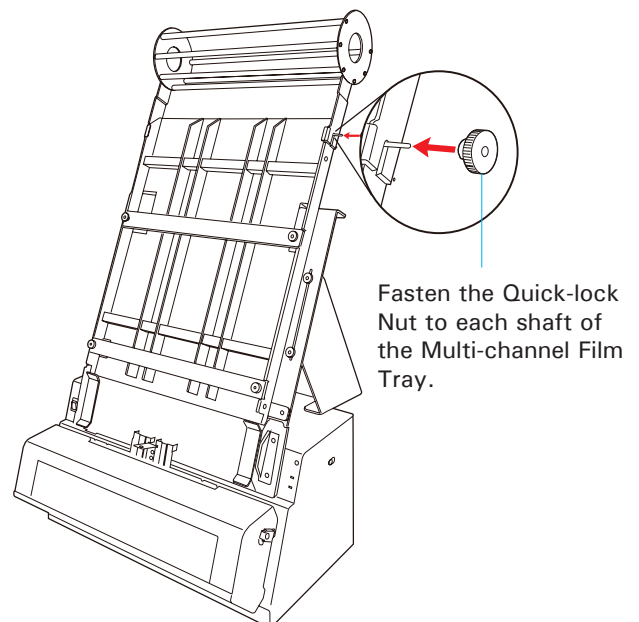


## Installing the Film-rolling Rack

1. Hold up both sides of the Film-rolling Rack carefully and locate two slots at the bottom sides of the Film-rolling Rack.
2. Locate two shafts at both sides of the Multi-channel Film Tray; then, snap the slots at the bottom of the Film-rolling Rack into the shafts of the Multi-channel Film Tray.



3. When done, fasten Quick-lock Nuts clockwise to each shaft to secure the Film-rolling Rack at the top of the Multi-channel Film Tray.



**NOTE:** For how to use the Multi-channel Film Feeder (MFF) with the digitizer and software in details, refer to the user's manual on the CD/DVD in your digitizer package.